

# FOODPRO® 3.5 RELEASE

## NEW FEATURES & HIGHLIGHTS

SUMMER 2025

### INSIDE THIS RELEASE:

FoodPro Leap	1
Invoice Entry	2
Menu Maintenance	2
Menu Grid Maintenance	2
Miscellaneous Updates	2
Web Preferences	2
Applets	2
My FoodPro	3

### FoodPro: A Leap Forward

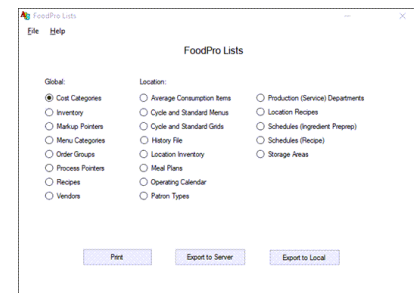
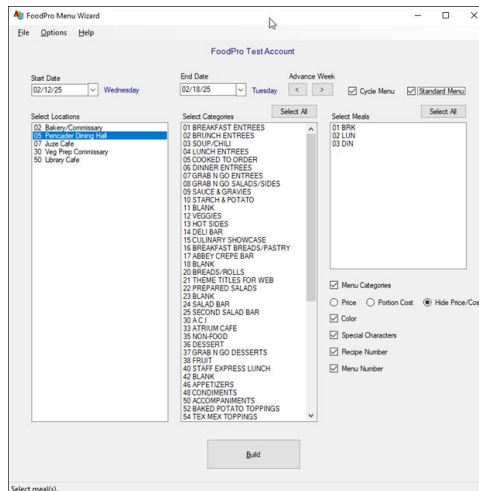


In 2016, Aurora Information Systems introduced the MyFoodPro user interface. At that time, many users could transition from using HostAccess to MyFoodPro without any significant issues. However, the idea had always been to make it easier to use MyFoodPro by updating programs to utilize newer technologies.

Since FoodPro 2.8, several programs have been updated and added to MyFoodPro; however, this release is a substantial step forward in terms of programs that have been converted to visual basic and therefore available to be run from MyFoodPro.

Statistically, we have converted 21 List and Utility programs, 11 Maintenance and Report programs, and 5 Applets in this release.

There are two types of conversions among these updates: a complete re-write in VB.NET or a rebuilt VB.NET front-end. The basic difference is that the front-end update retains the same report formatting that existed in the legacy program.



### Did you Know?

Aurora Information Systems is celebrating its 30<sup>th</sup> Year in 2025?

The winter of 1995 is when the company was founded and took over development and support of FoodPro.

[www.FoodPro.com](http://www.FoodPro.com)

While the complete re-writes generally let users Print Preview to Crystal Reports

Utility programs (Update Costs) simply execute the program and provide feedback if needed.

With this Release, the vast majority of users should be able to transition to MyFoodPro without any major inconveniences.

### Front-End Conversions

**Global Lists**  
Cost Categories  
Global Inventory  
Markup Pointers  
Order Groups  
Process Pointers  
Recipes  
Vendors  
**Location Lists**  
ACI  
Cycle and Standard Menus  
Menu Grids  
(Patron) History  
Location Inventory  
Meal Plans  
Operating Calendar  
Patron Types  
**Utility Programs**  
Update Btrees  
Update Costs  
**Reports**  
Catered Event Cost Statement  
Catered Event Sched. Report  
Transfer Cost Report

### Full Program Re-Writes

Pre/Post/Actual Eval. Report  
Menu Price Book  
Vendor Bid Exception Report  
Vendor Bid Ratio Report  
Display Menu Items & Acceptabilities  
Recipe Scheduler  
Process Pointer Scheduler  
Meal Plan Maintenance  
View Versions  
List Vendors  
LCS Builder "Applet"  
Service Needs Menu Builder (Word)  
Service Needs Menu Builder (Excel)  
Menu Builder (Word)  
Menu Builder (Excel)

## Invoice Entry

Invoice Entry has two new features in this release. First, users can now enter a Memo to be saved with an invoice. Click on the “M” button to open the Memo window and then type the desired text. Next, it should now be easier to manage substitutions in the program. If a vendor delivers a product to you (as a substitute) that has not been defined in FoodPro, you can update the invoice on the fly to account for that product. When dealing with the “Sub” for an item, In the VON field, you will enter a “S” (a space S). The program will recognize it as a “SUB” and then prompt you for the number of recipe units in a purchase unit (RU/PU). Defining this will allow the software to properly cost the item once the price per purchase unit is entered. In the future, we plan on expanding various reports to utilize these new features.

## Menu Maintenance

The copy feature within this program has been enhanced. Users can now choose to copy the Acceptability Factors from the source menu to the destination menu. It is still suggested that user should review the AF’s on the new menu(s) and make any adjustment that may be necessary.

☒ Copy Acceptability Factor Values

## Menu Grid Maintenance

The copy feature within this program has been enhanced. Users can now choose to copy a Menu Grid from the source location to a new location.

## Miscellaneous Updates

### *Purchasing Recap*

Warehouse Locations can now be run in Global

### *Transfer Detail Analysis*

Added a new Summary Report

### *Service Needs Maintenance*

Quality of Life Updates including updating Miscellaneous Additions

### *Menus on the Web*

NVDA Updates (Screen Reader Compatibility Updates)

### *WebCatering*

Converted web pages to newer .ASPX (.NET) code base

### *Location Maintenance*

Added a switch to turn Catered Event Archiving ON or OFF by default by location

## Web Preferences

We have updated the Web Preferences program with a small change that should help customers maintain Short and Long Menu categories a bit easier.

It was always a bit awkward trying to keep the Short and Long Menu Categories synchronized since users had to switch between the separate maintenance windows. In this release we have combined the two independent windows into one window with a left (Short Categories) and right (Long Categories) pane.

Now it will be much easier to keep them in sync or simply verify what is being displayed for each section. Additionally, the maintenance window can be printed (to paper or pdf) for use when comparing against other locations.

## Applets

As mentioned on Page 1, the Applets have been rebuilt in this release to an updated VB.NET program.

The new programs do not depend on 32bit Office, digital signatures, trusted publishers, or trusted locations.

The options within the individual Applets are the same as they were previously, except when the “Build” button is clicked it will export the data to the appropriate Office app (Excel or Word).

The Applets can be launched from MyFoodPro. Alternatively, they can be launched from a shortcut on the user’s desktop (it should point to the program in their defined “aurora/projects” folder.



1873 Route 70 East  
Suite 2J  
Cherry Hill, NJ 08003

Phone: 856-596-4180  
E-mail: [aurora@foodpro.com](mailto:aurora@foodpro.com)

## TRAINING OPPORTUNITIES

Aurora Information Systems offers both Onsite and Web-based training sessions. Onsite training allows Aurora to visit your campus, and work with your staff in any group size that fits your needs. There is a 2 day minimum requirement for scheduling Onsite training.

Web-based training is available for a minimum of 4 hours (then 1 hour increments thereafter).

Whether in-person or remote, Aurora will customize the training sessions to your campus' specific needs. Contact Aurora Information Systems for more information!

## MyFoodPro

MyFoodPro has been improved with a few new features in this release. The program UI has been enhanced to work better with 16:10 resolution ratios (this will likely be noticeable on newer laptops) as well as general scaling enhancements.

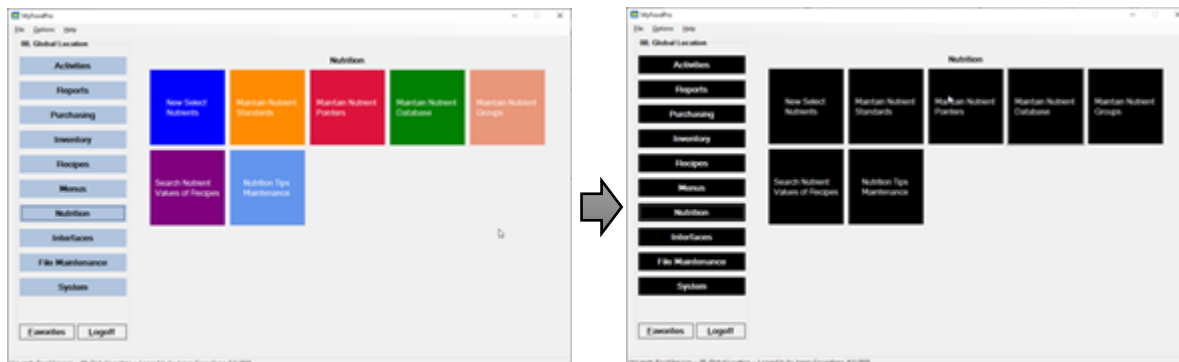
The tile layout has been changed to display 5 tiles horizontally and 6 tiles vertical (30 tiles per button group). Should the number of tiles exceed 30, then a scroll bar will be displayed to assist with navigating the tiles.

When logging in to MyFoodPro, the username field is no longer case sensitive, meaning if a user accidentally types their username in upper case, the program will still recognize it as valid.

Based on some feedback, we have introduced 2 new features. The first is a Find Program feature found under the Options Menu. When selected, the user can type in the partial name of a program and all potential matches will then be listed for them. Selecting a specific program from the list will force MyFoodPro to load the Button Group to the interface, so that the program can be selected while at the same time showing the user where the program is located within MyFoodPro.

The second new feature is also available on the Options Menu: Color Mode. Color Mode introduces five optional high-contrast color options for the button groups and tiles. These color options should help individuals with visual impairments or even reducing eye strain.

When 3.5 is installed on a pc, a shortcut for MyFoodPro should be created on the pc desktop, if not let IT or your coordinator know!



## CONSIDER ADDING FOODPRO MODULES

The FoodPro System is a robust and modular system designed to meet the needs of Food Service Operations. Over the years Aurora Information Systems has developed a number of optional enhancements that enables operations to custom-fit FoodPro to their business. Aurora will work with each client to install and test the new module and provide ongoing support as needed. Aurora Information Systems also prides itself on providing custom software solutions for our customers as their needs change and evolve. Contact us today to see how we can provide a solution to your situation!

### AVAILABLE ENHANCEMENT MODULES:

- |                                   |  |
|-----------------------------------|--|
| ○ Catering Sales Office Module    | ○ Web Catering Module                          |
| ○ Nutritive Analysis              | ○ Menus on the Web                             |
| ○ Commissary Production Module    | ○ EDI Invoicing Interface                      |
| ○ FoodPro on the Go!              | ○ Custom Labels (Barcode and Point-of-Service) |
| ○ Vendor Bid & Orders Interface   | ○ Label Data Export Interface                  |
| ○ Transfer Interface              | ○ Menu Data SQL Export Module                  |
| ○ POS Interface & Sales Reporting | ○ Waste Tracking and Reporting Module          |
| ○ Accounts Payable Interface      | ○ Inventory Import Module                      |
|                                   | ○ MyEmissions Interface                        |

[www.FoodPro.com](http://www.FoodPro.com)