

FOODPRO® RELEASE 2.9

PRODUCT BULLETIN

Spring 2017

INSIDE THIS RELEASE:

Location Inventory	1
Location Recipe	
Master Lists	2
Menus on the Web	2
Nutritive Analysis	2
Miscellaneous Updates	3
Global Recipe	3
Modify Delivery Information	3
Purchase Recap	3
Replace Ingredient Program	4
Commissary Production Report	4
Tech Updates	5
Commissary Production Module	5

LOCATION INVENTORY MAINTENANCE AND LOCATION RECIPE MAINTENANCE

Each program has been re-developed as a VB.NET program. In doing so, we have also added new features and fields. Each program now offers a Where Used Report, Copy To/Copy From functions, and a Replicate Mode.

Location Inventory Maintenance offers two additional features: the ability to review and define a default Vendor Order Number as well as the ability to Add/Modify/Delete UPC's.

Location Recipe Maintenance now displays the ingredients within the primary window (as opposed to being "hidden"). The program also now features an Update Cost option which will force the recipe to be re-costed when the program closes, users can then review a confirmation report, if desired.

Ingredient	Name	Amount	Unit	Portion Cost
0343	MUSHROOMS FRESH	0.2500	LB	0.001
1005	ONIONS YELLOW FRESH	1.0000	LB	0.001
0209	CELERY DICED	4.0000	LB	0.022
1260	SOUP VEGETABLE BEEF	15.9375	QT	0.056
210006	DUMPLINGS	340.0000	each	0.173
5643	KOSHER SALT	0.2500	LB	0.002

Upcoming FoodPro User Conferences:

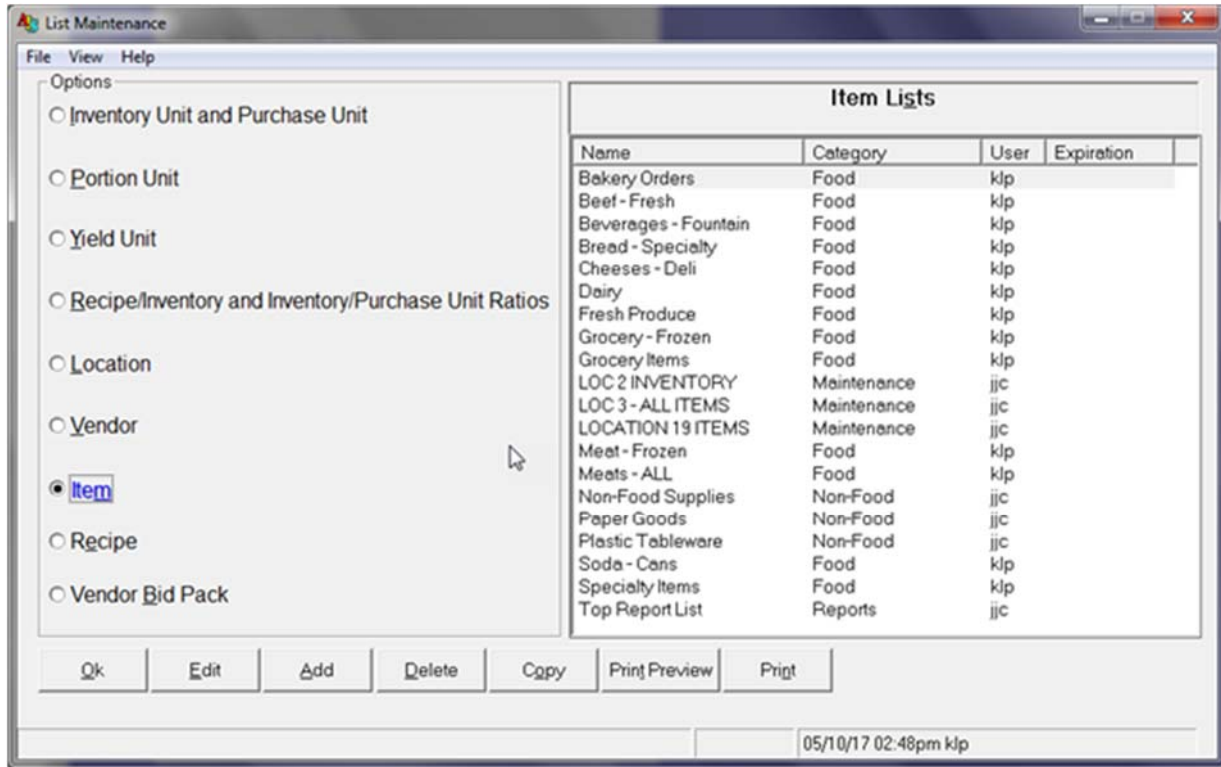
- University of Maryland: July 2017
- University of California - Riverside: July 2018

www.FoodPro.com

MASTER LISTS

Master Lists has been enhanced in this Release to help users organize lists more efficiently. Recipe and Inventory Master Lists can now be associated to user-defined categories. Additionally, when lists are created (or edited), users can define an expiration date for them. The Listview summary (on the right side of the program window) has also been updated with new columns: Category, User, and Expiration. Users can sort the columns in the Listview to make it easier to find specific lists.

This Release will also feature several programs that will be updated to not only utilize the List Category feature, but users will be able to apply category filters to make selecting lists even easier.



MENUS AND NUTRITIVE ANALYSIS ON THE WEB

We continue to expand the features available to consumers when they use your Menus on the Web website. Customers will now be able to search recipe ingredients that contain (or do not contain) specific words or phrases.

For example, a customer could search for recipes that contain the "Palm Oil" because they are sensitive to it. If any recipe has Palm Oil as a listed ingredient (whether from a raw inventory item or Manufacturer Data), then that recipe will appear on the resulting list of recipes.

NUTRITIVE ANALYSIS MODULE

The Select Nutrients program has been converted to a VB.Net program. It now offers more user-friendly interface that allows authorized users to review and select (or re-select) nutrients much easier than previously possible. Users are presented with two columns: Nutrients Selected and Nutrients Available. Users select the desired nutrients and click the appropriate arrow buttons to move the nutrient(s) from one column to the other.

Additionally, with this release, we are updating the list of available nutrients. Part of the update is due to upcoming changes to the standard nutrient label. Other changes were made to simplify the overall list of nutrients. Please go to FoodPro Online Help for the Select Nutrients to review the updated list of available nutrients.

MISCELLANEOUS UPDATES

Menu Maintenance

When a user attempts to open a menu which is locked by someone else, the program closes after they acknowledge the lock notification. In this release, this behavior has been changed so that the program doesn't close.

Vendor Bid Exception Report

This report no longer shows items when the quantity received is zero.

Inventory Transfers

A new parameter has been added to Inventory Transfers. The parameter, when activated (by location), will repeat the transfer header information on each printed page. The header information will include: From, To, Date, & Transfer Number. Users will need to contact Aurora to activate this parameter.

Location Inventory and Location Recipe Templates

We have enhanced both of these programs so that when items (or recipes) are deleted, any associated schedules will also be deleted.

Prepared Product Transfer Labels

The Prepared Product Transfer Label program has been changed to allow locations to generate new and updated labels after a transfer has been updated.

Location Cost Summary

Clients that have a location that is defined as a dedicated Catering Location, may now choose to include catered events as part of the location's overall food cost. The choice essentially eliminates the Catered Events subtotal line from the Location Cost Summary.

Waste Tracking and Reporting Module

Clients that use the Waste Tracking and Reporting Module now have an alternate method of recording waste within FoodPro. The update adds waste entry functionality to the Service Record Entry program. After selecting to display Waste Entry fields, users can enter waste as they are entering service records. Alternatively, users can have the program calculate waste for them based on what they entered for the amount served of a given recipe. For example, if I forecasted to serve 300 portions of lasagna, then I enter 285 for the amount served, the program would calculate the difference (300-285) and auto-fill 15 portions as the waste. Of course, as is typical, the user can override the calculated number if required. Additionally, users can optionally display the cost of waste as well through a separate optional field. All of these options can be controlled via user privileges to protect the access to these features.

GLOBAL RECIPE

The Global Recipe Maintenance program has been updated with three new features in this release. The first update provides a method for users to arrange (and re-arrange) the webcodes for recipes. This feature can be accessed from the Populate List utility from within the List Menu. Once opened, use the dropdown list below the webcode list to review the new options: Resequence Ascending, Descending, and Custom. These options enable a user to change the order of existing webcodes for one or more recipes.

The next new feature changes the Export to Word option of the program. Users of this program should be aware that the ingredient grid has two different viewing options: Decimal Quantities or Standard Measurement Quantities. In this release, the Export to Word feature has been updated that allows the exported recipe to reflect the current view displayed in the grid. In other words, if a user chooses to view a recipe using Standard Measurements, then if they choose to export the recipe to Word, the exported document will display the recipe using Standard Measurements.

The third new feature changes the Last Recipe Viewed list. In this release, we've added the recipe number to the list to make it easier for user to identify specific recipes.

MODIFY DELIVERY INFORMATION

This program has two new enhancements that will provide users with valuable information while they are making purchasing decisions. The first new option is that users can choose to display inventory prices for the items displayed in the currently loaded order group (Options Menu -> Show Prices). The prices will be displayed in the Purchase Unit Column and will show either the Last Price or the Bid\Contract Price. If the Last Price is displayed, it will be marked with an asterisk (*). Users can also click a date on the calendar to review what the prevailing price will be on that date. This is especially useful when reviewing prices for products that can change weekly.

The second new option is that users can select to display Allergens and Manufacturer's Data for their items. To do this, a user must go to the Options Menu and select Show Item Information. Once selected, the user will need to click on an item's name within the Purchasing Grid to open the Item Information pop-up window.

PURCHASE RECAP

The Purchase Recap program has a few new updates with this release. The Detail report now displays quantity totals as well as dollar totals. A new sorting option will be available to users: Sort by Purchase Unit. Users can now choose to display a new optional column that will display inventory Vendor Order Numbers (VON's). Lastly, two new print options are available: Print by Name by VON and Print by Number by VON.

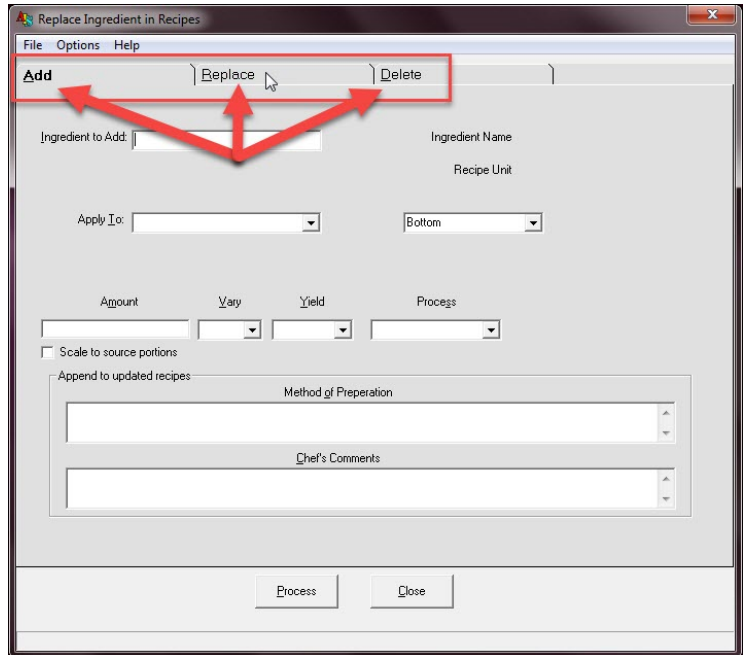
REPLACE INGREDIENT PROGRAM

The Replace Ingredient Program has been enhanced with a couple of new options. The program has a new look that reflects some of these new options. It now has a tabbed view divided between 3 options: Add, Replace, Delete. Add and Delete are both new options that will allow users to change the ingredients for the selected recipes.

When users Add an ingredient to a recipe, they can choose to add it to the top or bottom of the ingredient list. They also can choose to scale the ingredient to the source portions of the recipe (which can be helpful when adding the ingredient to a list of recipes where the source portions may vary slightly).

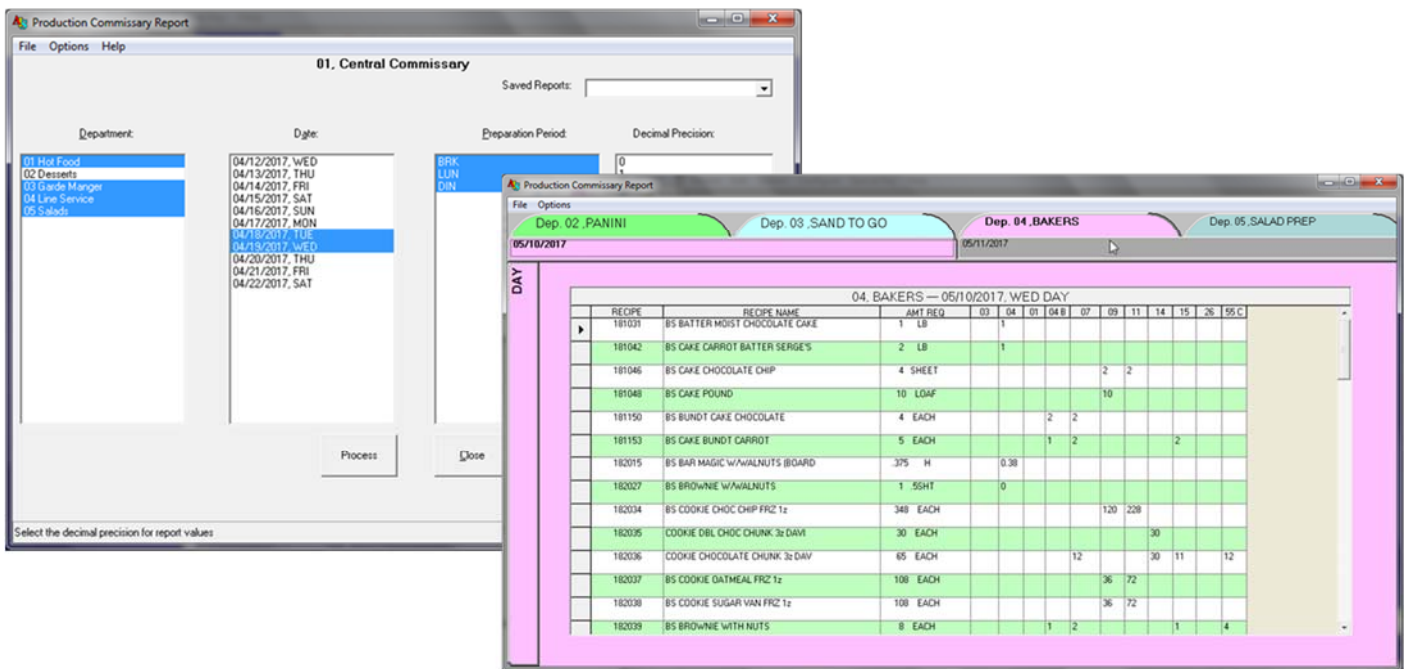
Deleting an ingredient from multiple recipes will be much simpler with this new feature. Enter the inventory item to be deleted, then select the appropriate Recipe List and click the Process button. This will make the task of cleaning up recipes a lot easier.

The Confirmation and Exception Reports have been updated to include the Add and Delete options.



COMMISSARY PRODUCTION REPORT

The Commissary Production Report has been redesigned to allow users to generate output for more than one department/day/meal at a time. Once the criteria has been selected and processed, users are presented with a tab-based view separated by department, by day, by meal. The user can then print one, multiple, or all of the information presented to them. Another enhancement is that users can also save their criteria selections with assigned names, allowing them to re-use them over and over again.





1873 Route 70 East
Suite 2J
Cherry Hill, NJ 08003

Phone: 856-596-4180
Fax: 856-596-4181
E-mail: aurora@foodpro.com

ONSITE TRAINING

Onsite training is one of the ways that your staff makes the most out of FoodPro.

Sessions are tailored to your operation, using your data. Great for veteran staff and new hires alike.

Contact Aurora Information Systems for date availability!

TECHNOLOGY UPDATES

The conversion to ASP.NET for your organization's Menu on the Web website began with FoodPro 2.7. If your conversion has not already occurred, please contact Aurora to schedule it at your convenience, or you will not be able to take advantage of any new features as they are released. The upgrade may require additional software upgrades, therefore they will be handled on a client-by-client basis. For operations still using our standard web pages, .ASP's will no longer be distributed with new releases.

Each new year potentially offers 3rd party software upgrades. The following software versions are available with FoodPro Release 2.9 (some will require separately schedule updates): Rocket Software's UniVerse version 11.3.1, Rocket Software's U2 Web Development Environment (WDE) version 5.2.2, and Esha Research's Food Processor version 11.2.

COMMISSARY PRODUCTION MODULE

The module has had a few enhancements added to it for this Release. The module now supports make today / ship today. Users can now add multiple Order Group schedules.

The Commissary Orders program has a few new features as well. Users can now Batch Recipes from within the program. When cutting and pasting columns, quantities will be summed together as opposed to being overwritten.

CONSIDER ADDING FOODPRO MODULES

The FoodPro System is a robust and modular system designed to meet the needs of Food Service Operations. Over the years Aurora Information Systems has developed a number of optional enhancements that enables operations to custom-fit FoodPro to their business. Aurora will work with each client to install and test the new module and provide ongoing support as needed. Aurora Information Systems also prides itself on providing custom software solutions for our customers as their needs change and evolve. Contact us today to see how we can provide a solution to your situation!

AVAILABLE ENHANCEMENT MODULES:

- | | |
|-----------------------------------|--|
| ◇ Catering Sales Office Module | ◇ EDI Invoicing Interface |
| ◇ Nutritive Analysis | ◇ Guiding Stars Nutrition Interface |
| ◇ Commissary Production Module | ◇ Custom Labels (Barcode and Point-of-Service) |
| ◇ FoodPro on the Go! | ◇ Label Data Export Interface |
| ◇ Vendor Bid & Orders Interface | ◇ Menu Data SQL Export Module |
| ◇ Transfer Interface | ◇ Waste Tracking and Reporting Module |
| ◇ POS Interface & Sales Reporting | ◇ Inventory Import Module |
| ◇ Accounts Payable Interface | |
| ◇ Web Catering Module | |
| ◇ Menus on the Web | |